



SPRING CENTER PIVOT AND LATERAL IRRIGATION SYSTEM PREPARATION

Wesley Porter,

University of Georgia, Department of Crop and Soil Sciences

Calvin D. Perry,

University of Georgia, C.M. Stripling Irrigation Research Park

Introduction

The main objective of this publication is to provide a checklist of what is needed to properly prepare a center pivot or lateral irrigation system for the production season. All of the topics covered apply to both pivot and lateral irrigation systems, but for brevity, only center pivots will be referenced. By using this publication as a guideline for preventative maintenance, you should be able to avoid most breakdowns during the growing season. Preventative maintenance will save you time, money, and yield during the production season.

Center pivot irrigation systems are used heavily during the production season with some operated continuously throughout the season. But when we are finished with it for the season, it gets stored until we need it again, and then we expect it to operate perfectly with very little maintenance. For example, freezing temperatures during winter can cause damage to center pivot systems that are not properly winterized. Extreme cold weather causes many issues in water pipes throughout the system; therefore, it is very important to check pivots for freeze damage several weeks before you need the system for crop irrigation. Systems need to be in top shape when it's time for that first application of irrigation water.

Review the following checklists for an overview of things that should be taken care of before you start up your irrigation system.



START-UP CHECKLIST

Power Unit

Service the engines, including changing the oil and oil filter (typically recommended at a minimum every 6 months or 100 operating hours), fuel filter, air filters, and spark plugs (if applicable). Check the fuel lines for leaks and deterioration, the wires for pest damage, and the bolts securing the electric motor. Grease the drive shafts and service points; tune-up the coolant system, ensure that the pump packing is in good condition, and remove any debris around the motor. The power unit is one of the most important components of the irrigation system, so the best time for this type of preventative maintenance is several weeks ahead of operation.

Pumping System

Centrifugal

The pump should turn freely and gaskets should seal properly. Check for leaks, any premature signs of deterioration, wear, or seizing of components. Verify sufficient lubrication and that pump and piping is properly supported.

Turbine

Check the lubrication control system and service if necessary. Ensure that the discharge piping is firmly supported and securely bolted, maintaining the packing if applicable. If using a submersible motor and pump, it is critical that the static level and drawdown in the well is monitored. See the related publications section for recommended pumping time and drawdown testing.

Suction (Intake) Line for Surface Water

Verify that the intake line and screen are clear; ensure that the intake line is properly supported; and repair leaks as needed. If possible, pull the pipe out of the water and check on the condition of all suction components.

Piping / Drains

Close all manual drains; verify that control valves are working properly; inspect aboveground pipes, gaskets, seals, etc.; and replace drains in the booster pumps.



Figure 1. The main control panel on the irrigation system. Ensure power is disconnected and all switches are turned to the "off" position before opening.

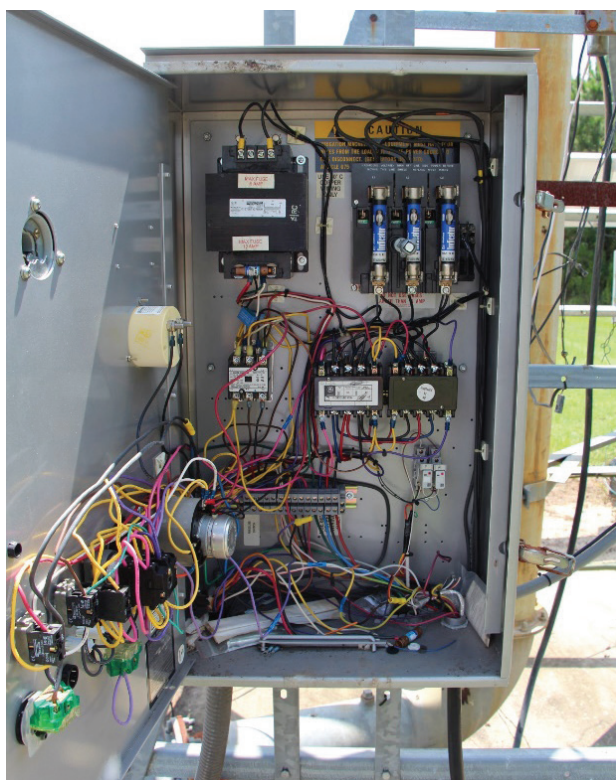


Figure 2. The inside of the main control panel. Check all wires, connections, and fuses.



Figure 3. The fuse inside the main control panel.

Electrical System

Use proper safety procedures when checking the electrical system. Pivots operate on 480 volts of three-phase power, which is deadly. Always touch the door of the panel box (Figure 1) with the back of your hand to ensure it is not charged with electricity. Verify power connection to pivot is operational and that the electric pump motor is in good working order. Inspect the pivot control panel for any debris, insulation damage, loose bolts, screws, or nuts, and frayed or burnt wires (Figure 2). Check the condition of fuses (Figures 3 and 4) and ensure that you have a few extra fuses available. Verify that the wiring/cabling on the pivot is sound. If you observe any problems, immediately shut off power to the system and repair the damage.

There may be other components to your center pivot system not included in this pre-operation checklist. If so, check those components according to manufacturer recommendations. Next, turn the system on and go through the operating checklist.



Figure 4. Notice the visual indicator on these main power fuses in the control panel. If a fuse is questionable, power the system down, remove the fuse, and check connectivity with an ohm meter. If it does not have a visual indicator, testing resistance/connectivity is another way to check whether a fuse is operational.

OPERATING CHECKLIST

Pressure

Verify proper pressure readings at the pump, pivot point (Figure 5), and end of pivot. Always check the pressure with the pivot parked in the same spot and not in use. Compare these readings to the pressures listed on the manufacturer's sprinkler chart. Any case of conflicting pressures could be an indication of a problem and should be investigated further.

Flow

With the pivot fully operational, check the system flow rate at your installed flow meter. Compare the readings to the design flow rate on the sprinkler chart. Just like the pressure reading, check the flow rate wherever applicable. Verify that the flow meter is working. If the meter does not appear to be working correctly, contact the [Georgia Soil and Water Conservation Commission](#).



Figure 5. The main pressure gauge at the pivot point. The pressure should be the highest at this location.

Sprinklers

Walk along the length of the operating pivot looking for malfunctioning sprinklers. Check for clogs, worn impact plates, missing sprinklers, etc. If possible, verify that each sprinkler matches the sprinkler head (Figures 6 and 7) specified in the sprinkler chart. Remember that 50 percent of the crop is irrigated by sprinklers on the last 30 percent of the center pivot system. Sprinklers wear out over time and need replacing, so do not assume that they are performing correctly without checking them. If the sprinklers do not seem to be applying the correct irrigation rates, seriously consider performing a uniformity check (details to follow).

End Gun and Booster Pump

Check all parts of the end gun (Figure 8) to ensure that there are no leaks. Make sure the booster pump is working correctly, and also confirm that all moving parts and stops in the end gun are working and set correctly. Check for any signs of wear, and replace components as necessary.

Uniformity

Consider performing a “catch-can” test to evaluate water application uniformity. Instructions can be found in [UGA Extension circular 911](#), “Evaluating and Interpreting Application Uniformity of Center Pivot Irrigation Systems.” Non-uniform application may result in streaking of crop growth and/or yield. This test can also identify whether or not individual nozzles (Figure 9) are performing within specifications.



Figure 6. Visually inspect each sprinkler that does not seem to be operating correctly. Older sprinklers and components become worn due to use and weather damage, and they often need replacing to ensure maximum coverage and



Figure 7. A new sprinkler on a drop hose. There are visible differences between new and older/worn sprinklers, which affect both appearance and operation.



Figure 8. An end gun and booster pump. Proper operation of these components is critical for areas outside of the pivot-sprinkler coverage area.



Figure 9. Nozzles operating on a center pivot system. In some instances, uniformity or other nozzle-related issues can be observed through visual assessment. Sprinkler uniformity can be quantified using the methods described in [UGA Extension publication C911](#).

Regulators

Most current center pivots and, in particular, pivots that encounter varying terrain or have variable rate irrigation should be fitted with pressure regulators (Figure 10). Visually verify that the regulators are working properly by ensuring that each nozzle has an equivalent flow. If a nozzle seems to be operating at a higher pressure than the neighboring nozzles, or if the regulator is leaking, further evaluate the regulator. Replace missing, leaking, or malfunctioning regulators if needed. Remember that regulators are specified by pressure and flow rate range.

Drain (Check) Valves

These valves allow air out of the pivot lines when filling with water. They act as drains once the pivot shuts off (Figure 11). During the sprinkler inspection, check all of these valves to ensure that they are functioning properly. A valve stuck in the open position will increase water loss due to excess water application. If a valve is stuck closed, it will not allow the water to drain from the pivot main line. Determine why the valve is malfunctioning, and either repair or replace it.

Leaks

This is probably the easiest problem to identify. Leaks result in pressure and water losses and should be repaired.

Alignment

Verify that the center pivot operates in proper alignment with the towers. A misalignment issue can cause significant problems between pivot sections (Figure 12).

Safeties

Test safety circuits to verify proper performance. It is very important that all safety and stop switches are working correctly (Figure 13). Malfunctioning safeties and stops can cause damage to the system or objects in its path.



Figure 10. In this case, the pressure regulator (blue and gray piece) is attached directly to the top of the main pivot line.

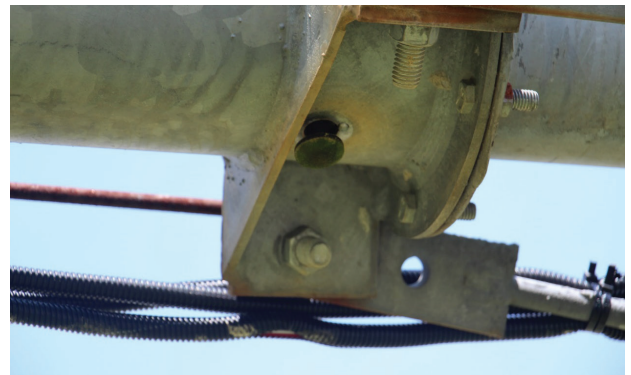


Figure 11. The drain valve for one of the pivot towers. In this case, the valve is open because there is no water in the system.

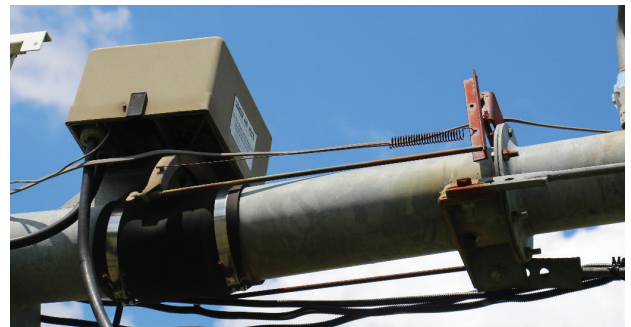


Figure 12. An alignment switch located at the connection point between two pivot towers. Ensure that all components on the alignment system are in working order. Replace any components that appear worn and may not last through the season.



Figure 13. The stop and safety switch on a pivot. In this case, if either switch malfunctioned, the pivot would walk over the fence and into the road—a very dangerous situation.

Tires

Check for wear, cracking (Figure 14), low pressure, etc. Typically, wintertime is when tires will leak and go flat. Replace any tires that are in questionable condition to avoid having to do this mid-season. Make sure all lugs are tight.

Gearboxes / Drivelines

Remove drain plugs to allow any condensed water to drain away (Figures 15, 16, and 17). Check the oil level, and grease any fittings on the driveline. Then, repair damaged shields, and make sure that drive shafts are in good operating condition, not bent or damaged.



Figure 14. Cracks beginning to appear on tires. Cracks are typically due to weather wear and should be taken into consideration before the season starts. In some cases, system downtime costs more in yield than a single tire is worth.



Figure 15. Gearbox with the shroud intact around the driveline.



Figure 16. Gearbox with the shroud removed from the universal joint and the driveline exposed.

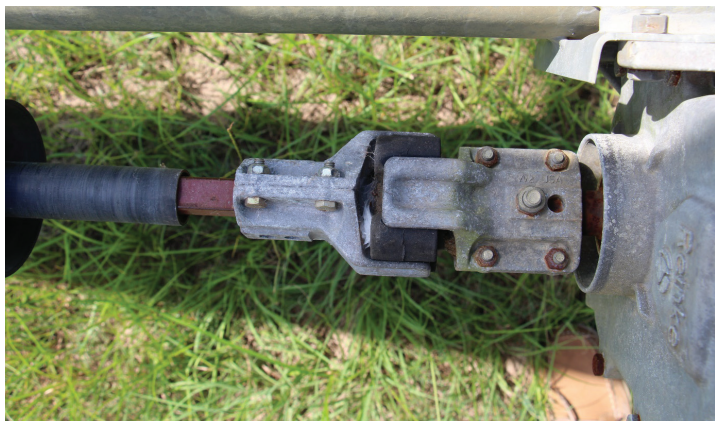


Figure 17. Close-up view of the universal joint and driveline connection point. Rodents and insects love to inhabit these areas, so use caution when opening and inspecting. Clear, clean, and replace parts as necessary.

Pivot point

Inspect the anchor bolts and grease the pivot point (Figures 18 and 19).



Figure 18. Sufficient greasing, proper connections, and bolt tightness are critical at the pivot point. Service and replace parts as necessary to ensure correct operation throughout the season.



Figure 19. Visible signs of wear and use are often evident on the pivot point. In some cases, a closer inspection is needed. Carefully consider whether repair or replacement is needed.

Autostop / Autoreverse / End-Gun Coverage

Test the control panel settings for autostop, autoreverse, and end-gun coverage areas. Make sure end-gun watering angles are set properly. Avoid applying water to public roadways with the end gun, as this can become a liability issue.

Chemigation Equipment

Check the pump and safety equipment as well as the calibration of the pump. Verify that all hoses and seals are in good working order and are not cracked or leaking.

RELATED PUBLICATIONS

- Evaluating and Interpreting Application Uniformity of Center Pivot Irrigation System (UGA Extension C 911) — <http://extension.uga.edu/publications/detail.cfm?number=C911>
- Irrigation Pumping Plants and Energy Use (UGA Extension B 837) — <http://extension.uga.edu/publications/detail.cfm?number=B837>
- Irrigation Pumping Plant Performance (UGA Extension C 965) — <http://extension.uga.edu/publications/detail.cfm?number=C965>
- Maintaining Irrigation Pumps, Motors, and Engines — <https://attra.ncat.org/attra-pub/viewhtml.php?id=112>

extension.uga.edu